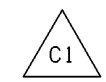


NOTES:

- 1. SEE DEVICE SUMMARY (MLI 0414)
FOR CONTROL DEVICE SETTINGS.

REVISIONS			
REV	DESCRIPTION	DATE	APPROVED
C	(1) UPDATED COMPLEMENTARY DOCS DCI-03023914 AN-03028253 TAMMY A PRATT	03-12-08 TAP	TAP VAT

REVISE ON CAD ONLY
UG PART: GR0669-0418
(SPEC: 355B8948)



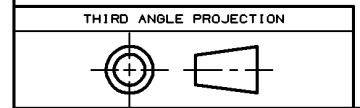
1	SYMBOLS, PIPING	123E4888
IT.	NOMENCLATURE	IDENT
LIST OF COMPLEMENTARY DOCUMENTS		

A	C	REV	REV STATUS
2	1	SH	OF SHEETS

UNLESS OTHERWISE SPECIFIED	SIGNATURES	DATE	GE Power Generation GENERAL ELECTRIC COMPANY GAS TURBINE Greenville, SC	
DIMENSIONS ARE IN INCHES. TOLERANCES ON: 2 PL DECIMALS ± 3 PL DECIMALS ± ANGLES ± FRACTIONS ± - ✓	DRAWN TERESA MILLWOOD	01-02-02	DIAGRAM, SCH PP-TRIP OIL FIRST MADE FOR ML-7A1PEA220-1,2 0418	
	CHECKED ROBERT GEORGE	01-02-02		
	ENGRG PAUL BLACK	01-02-02		
	ISSUED TERESA MILLWOOD	01-02-02		
	QA JOYCE RICE	01-02-02		
APPLIED PRACTICES 348A9200	SIM TO: 355B8683		SIZE B CAGE CODE	DWG NO 355B8948
		SCALE NONE	CALC WT - LBS	SHEET 1

© COPYRIGHT 2001 GENERAL ELECTRIC COMPANY

PROPRIETARY INFORMATION-THIS DOCUMENT CONTAINS
PROPRIETARY INFORMATION OF GENERAL ELECTRIC
COMPANY AND MAY NOT BE USED OR DISCLOSED TO
OTHERS, EXCEPT WITH THE WRITTEN PERMISSION OF
GENERAL ELECTRIC COMPANY.



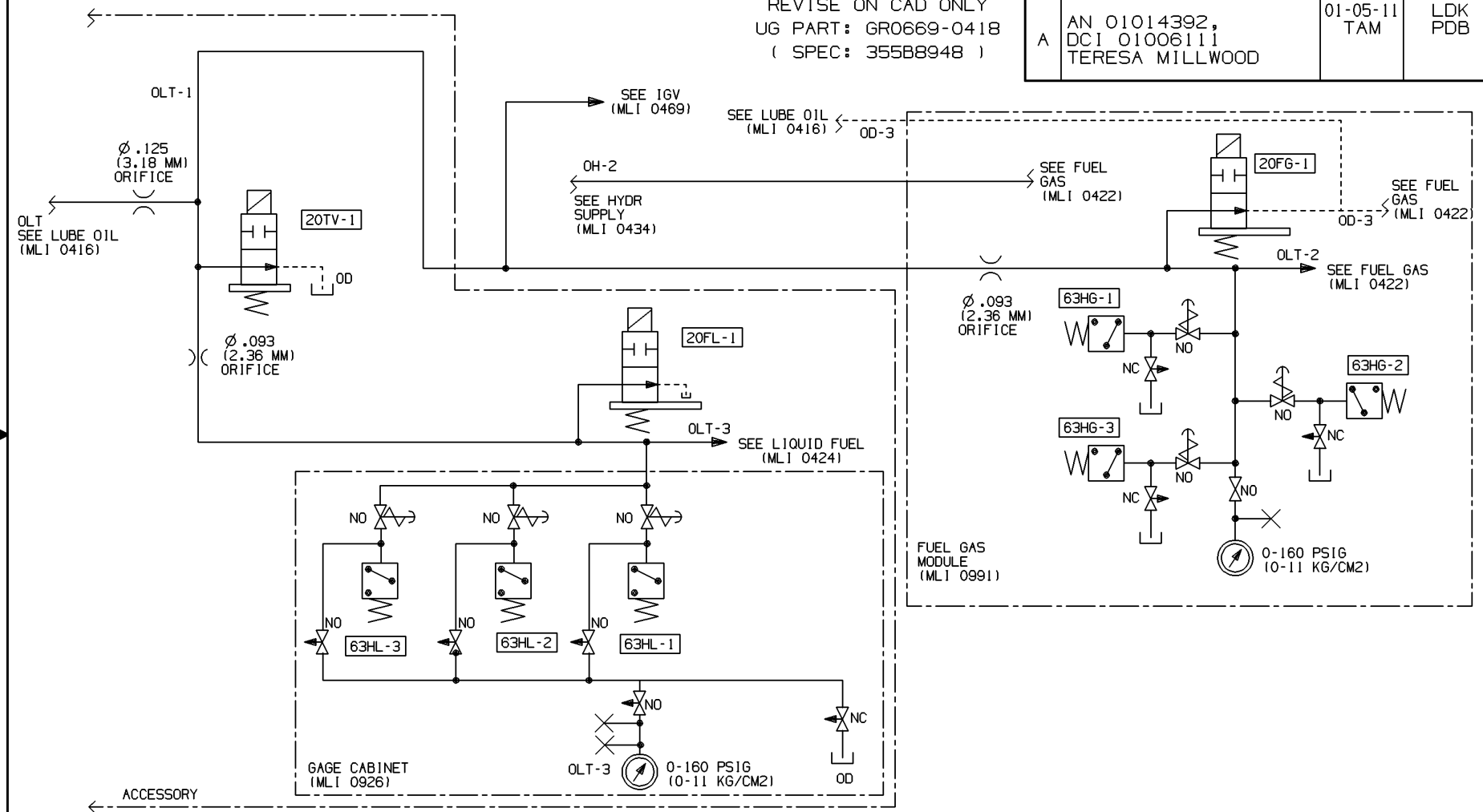
DT - 1N

DISTR TO


SIZE **B** DWG NO 355B8948 SH 2 REV A

REVISIONS			
REV	DESCRIPTION	DATE	APPROVED
A	AN 01014392, DCI 01006111 TERESA MILLWOOD	01-05-11 TAM	LDK PDB

REVISE ON CAD ONLY
UG PART: GR0669-0418
(SPEC: 355B8948)



© COPYRIGHT 2001 GENERAL ELECTRIC COMPANY
PROPRIETARY INFORMATION-THIS DOCUMENT CONTAINS
PROPRIETARY INFORMATION OF GENERAL ELECTRIC
COMPANY AND MAY NOT BE USED OR DISCLOSED TO
OTHERS, EXCEPT WITH THE WRITTEN PERMISSION OF
GENERAL ELECTRIC COMPANY.

 <i>GE Power Generation</i>	GENERAL ELECTRIC COMPANY GAS TURBINE Greenville, SC	SIZE	CAGE CODE	DWG NO
		B		355B8948
DRAWN TERESA MILLWOOD				
ISSUED TERESA MILLWOOD		SCALE	NONE	SHEET 2

DISTR TO